

# *The HIMSS Digital Health Indicator*

Anne Snowdon RN, PhD, FAAN  
Director of Clinical Research, HIMSS Analytics

## *The Need for a Digital Health Indicator Tool*

- **Digital health** is widely viewed as an opportunity to **optimize health system performance and achieve** financial sustainability. Today, it may inform plans for capacity building for health systems to more proactively manage a pandemic.
- **However:**
  - there is no standard definition or measure of digital health,
  - no clearly defined roadmap for health systems to guide progress
- **HIMSS is the only global network with a suite of maturity tools** to guide implementation of digital maturity
- **Transformation towards digitally enabled care delivery to expand capacity to meet demands for care requires a team approach!**

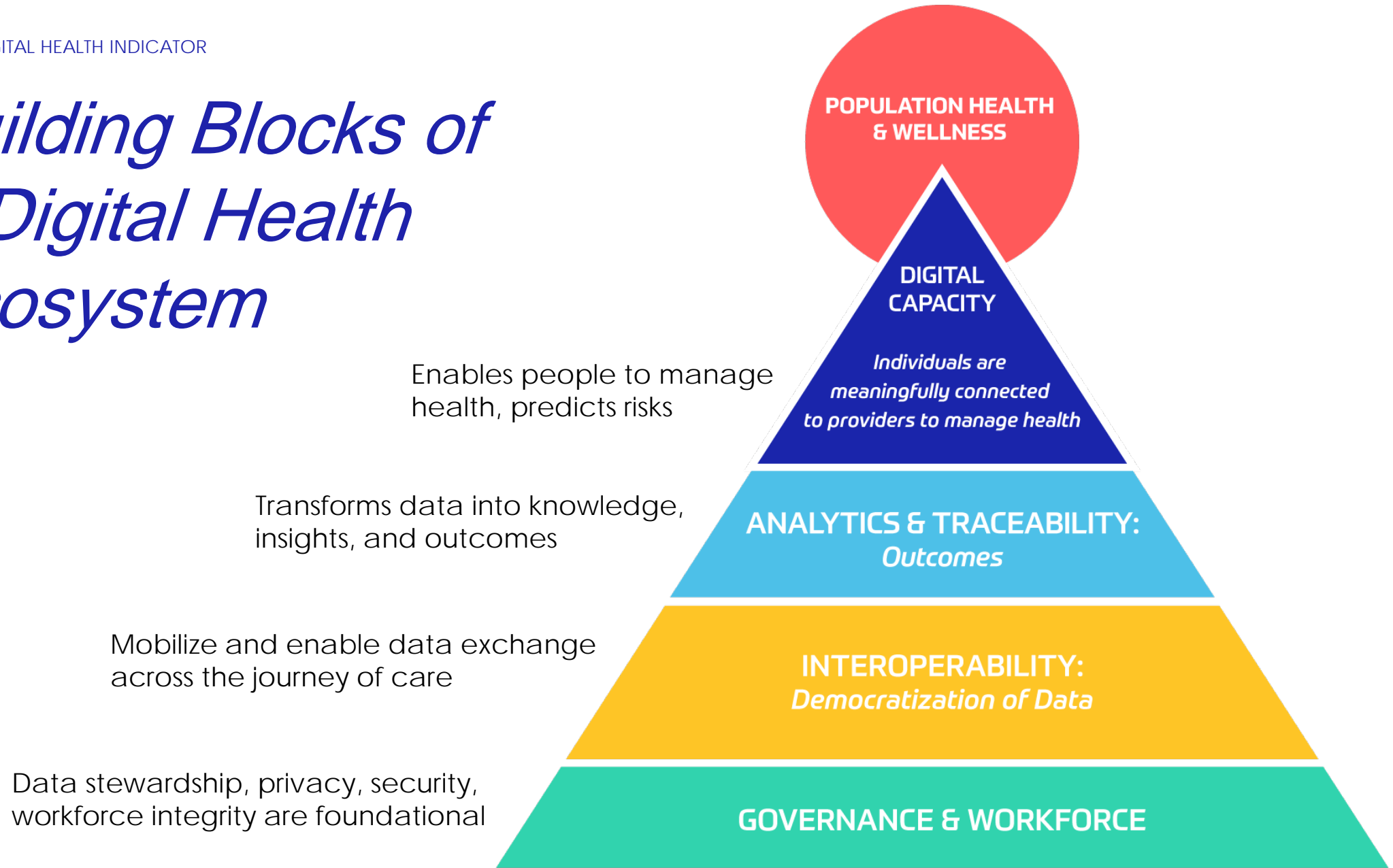
# *Methodology*

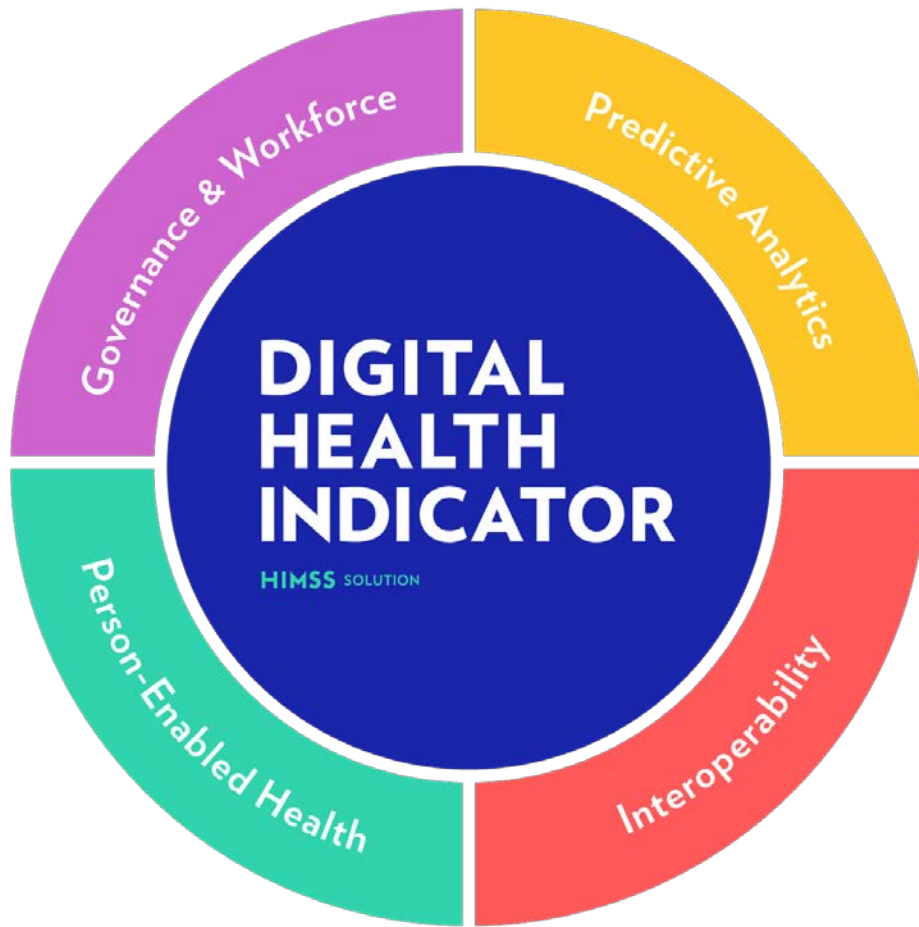
1. Critical analysis of current state of the evidence related to digital health:
  - analysis of digital health definitions
  - review of current measures, frameworks and models
2. Design a digital health framework and measurement strategy
3. Pilot testing: USA, Canada, Denmark, for validation, feedback and fine tuning

# *What is Digital Health?*

Digital health **connects and empowers people and populations to manage health and wellness**, augmented by highly accessible and **supportive provider teams** working within flexible, integrated, interoperable, and **digitally-enabled care environments** that strategically leverage digital tools, technologies and services to transform care delivery.

# *Building Blocks of A Digital Health Ecosystem*





The Digital Health Indicator (DHI) **measures progress toward a digital health ecosystem.** An ecosystem that connects clinicians and provider teams with people, enabling them to manage their health and wellness using digital tools in a **secure and private environment** whenever and wherever care is needed. Operational and care delivery processes are **outcomes-driven**, informed by data and real-world evidence to achieve exceptional quality, safety and **performance that is sustainable.**

# Understanding the Dimensions

## Interoperability

- **Foundational:** Exchange of data accessible across clinical settings
- **Organizational:** Use of governance tools such as policy, security and privacy
- **Semantic:** Use of analytics tools and reporting to streamline data access and management
- **Structural:** Data centralization, automation and integration for seamless data flow

## Person-Enabled Health

- **Personalized:** People set their health and wellness goals and choose the digital tools that enable self management connected to providers when needed
- **Proactive:** Predictive analytics mobilize patient-level outcomes data to track progress toward goals
- **Population health:** Predictive analytics enable mobilization of data to track population health outcomes to enable proactive health and wellness

## Predictive Analytics

- **Personalized Analytics:** Connection between individuals and their provider teams for outcomes reporting
- **Predictive Analytics:** Tracking and tracing of outcomes across the journey of care identifying risk and strategy for care quality and safety
- **Operational Analytics:** Data mobilized to track and improve health system performance

## Governance & Workforce

- **Stewardship:** Leadership strategy informing oversight and accountability policies
- **Transparency:** Connectivity with people and populations provides indicators of quality, safety and outcomes
- **Policy and Decision-making:** Alignment of processes and strategy that support and incentivize performance
- **Workforce Capacity and Competency:** Transformation of care delivery by advancing digitally enabled care delivery, informed by outcomes data

# Digital Health Indicator Rapid Assessment

**Take your Digital Health Indicator Rapid Assessment Now!**

Select The Models You Have Reached Stage 6 or 7 (optional) View Model Information

AMAM
CCMM
CISOM
DIAM
EMRAM
INFRAM
O-EMRAM

**Answer Your Indicator Statements**

<p>Data is mobilized to track population health outcomes to inform personalized care strategies that support and sustain population health and wellness. <span style="float: right;">ⓘ</span></p> <p>Care delivery focuses on keeping people well by proactively intervening to reduce risk using predictive analytic tools. <span style="float: right;">ⓘ</span></p> <p>Consumers are the primary decision makers and use digital tools to self-manage their health and wellness. <span style="float: right;">ⓘ</span></p> <p>Staff are accountable for supporting consumer centric care that is personalized to the unique needs, circumstances and choices of the consumer, informed by evidence of value and consumer reported outcomes. <span style="float: right;">ⓘ</span></p> <p>Organizational strategy and performance outcomes are shared publicly to inform the community of impact and value achieved by the organization or health system. <span style="float: right;">ⓘ</span></p> <p>Organizational policies are responsive to consumer value informed by consumer participation at all levels of governance to inform and support consumer centric health care systems. <span style="float: right;">ⓘ</span></p> <p>Analytic tools at the point of care track consumer progress outcomes, to inform care decisions that mitigate health risks and optimize health outcomes. <span style="float: right;">ⓘ</span></p> <p>Predictive analytic tools segment the population based on risks and outcomes for population segments to identify the conditions under which best outcomes are achieved, to inform proactive interventions that strengthen population health. <span style="float: right;">ⓘ</span></p> <p>Analytic tools track operational performance in real time to inform leadership decisions to strengthen quality, safety, and cost outcomes across the organization/system. <span style="float: right;">ⓘ</span></p> <p>Consumers have access to their personal health records, health system services, educational tools and health navigation tools to support health decisions, navigate access to care and services from their own homes. Includes fully integrated virtual care and remote patient monitoring with intervention. <span style="float: right;">ⓘ</span></p> <p>Clinicians use secure devices in daily practice routines, to enable collaboration with other clinicians, including secure messaging, consultations, and real time access to patient data, securely managed to protect privacy. <span style="float: right;">ⓘ</span></p> <p>Security breaches and alerts are tracked using machine learning technologies to identify accuracy and risk of alerts, cost to manage breaches, and track compliance with security legislation. <span style="float: right;">ⓘ</span></p>	
--	--

Not Enabled
Fully Enabled

Clear
Benchmark Your Score
Email My Results

218

Your Estimated DHI Score

**Interoperability**

56%

**Predictive Analytics**

67%

**Governance & Workforce**

47%

**Consumer-Enabled Health**

39%

Lacking Strong

Start Your Journey to Improved Outcomes Today

**Take the Digital Health Indicator Virtual Assessment and:**

- Gain understanding of where your organization stands in your pursuit of digital health transformation, recommended next steps and information to benchmark your progress against peer organizations.
- Create a HIMSS Digital Health Indicator Roadmap including interviews, onsite facilitation with your leaders and a customized set of recommendations.
- Engage with a HIMSS DHI Partner of your choice to execute a comprehensive digital strategy built on trusted consulting frameworks and practices guided by your Digital Health Indicator recommendations.

For DHI Roadmap and Strategy, visit [Healthbox](#) to learn more.

## Scoring:

- 400-point scale
- 12 Indicators
- Administered at the health system level
- Receive additional points for being validated at Stage 6 or Stage 7



# Digital Health Indicator Virtual Assessment

**HIMSS**

Your Digital Health Indicator Virtual Assessment is Ready

**DIGITAL HEALTH INDICATOR**  
HIMSS SOLUTION

Hello,

Thank you for your interest in the HIMSS Digital Health Indicator (DHI) Virtual Assessment.

The DHI measures progress toward a digital health ecosystem. An ecosystem that connects clinicians and provider teams with people, enabling them to manage their health and wellness using digital tools in a secure and private environment whenever and wherever care is needed. Operational and care delivery processes are outcomes-driven, informed by data and real-world evidence to achieve exceptional quality, safety and performance that is sustainable.

We are looking forward to guiding you through the DHI process.

A link to your DHI Virtual Assessment can be found at the bottom of this email.

Please take your time filling this out, there is no deadline for completion. We want to make sure your responses are as precise as possible, so please [contact us](#) with any clarifying questions we can answer for you.

When prompted to enter your email address, please enter the email address the DHI Virtual Assessment link was sent to. Failure to do so will result in the assessment not being generated.

We will contact you within five business days after you have completed the assessment to set up time to review your DHI Virtual Assessment Report. We look forward to working with you.

Thank you again,  
The HIMSS Team

[Begin DHI Virtual Assessment](#)

**HIMSS**

## DIGITAL HEALTH INDICATOR

HIMSS SOLUTION

The Digital Health Indicator measures progress toward a digital health ecosystem. An ecosystem that connects clinicians and provider teams with people, enabling them to manage their health and wellness using digital tools in a secure and private environment whenever and wherever care is needed. Operational and care delivery processes are outcomes-driven, informed by data and real-world evidence to achieve exceptional quality, safety and performance that is sustainable.

**Your Estimated DHI Score**

**128**

**Need Help?**  
[EMAIL SUPPORT](#)

General Healthcare - Digital Health Indicator

7%

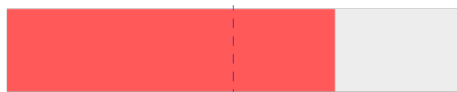
[Home](#) | [USA Healthcare](#) [DELEGATE](#)

- Instructions**  
0 of 0 questions [START](#)
- Organization & Contact Detail**  
1 of 16 questions [CONTINUE](#)
- Interoperability**  
36 of 36 questions [COMPLETED](#)
- Consumer Enabled Health**  
23 of 24 questions [CONTINUE](#)
- Predictive Analytics**  
20 of 20 questions [COMPLETED](#)
- Governance and Workforce**  
0 of 25 questions [START](#)
- Maturity Models**  
0 of 7 questions [START](#)

# DHI: Virtual Assessment For Example Health System

270

## Interoperability



Strong

## Predictive Analytics



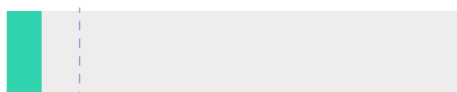
Medium

## Governance & Workforce



Strong

## Person-Enabled Health

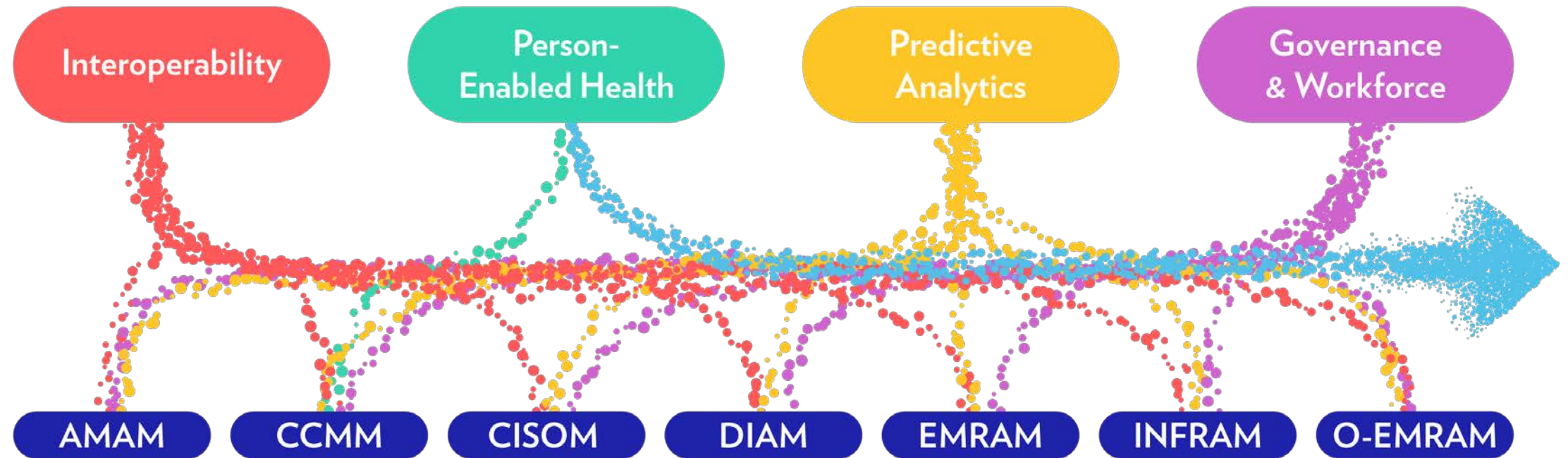


Focus Area

## Overall Recommendations

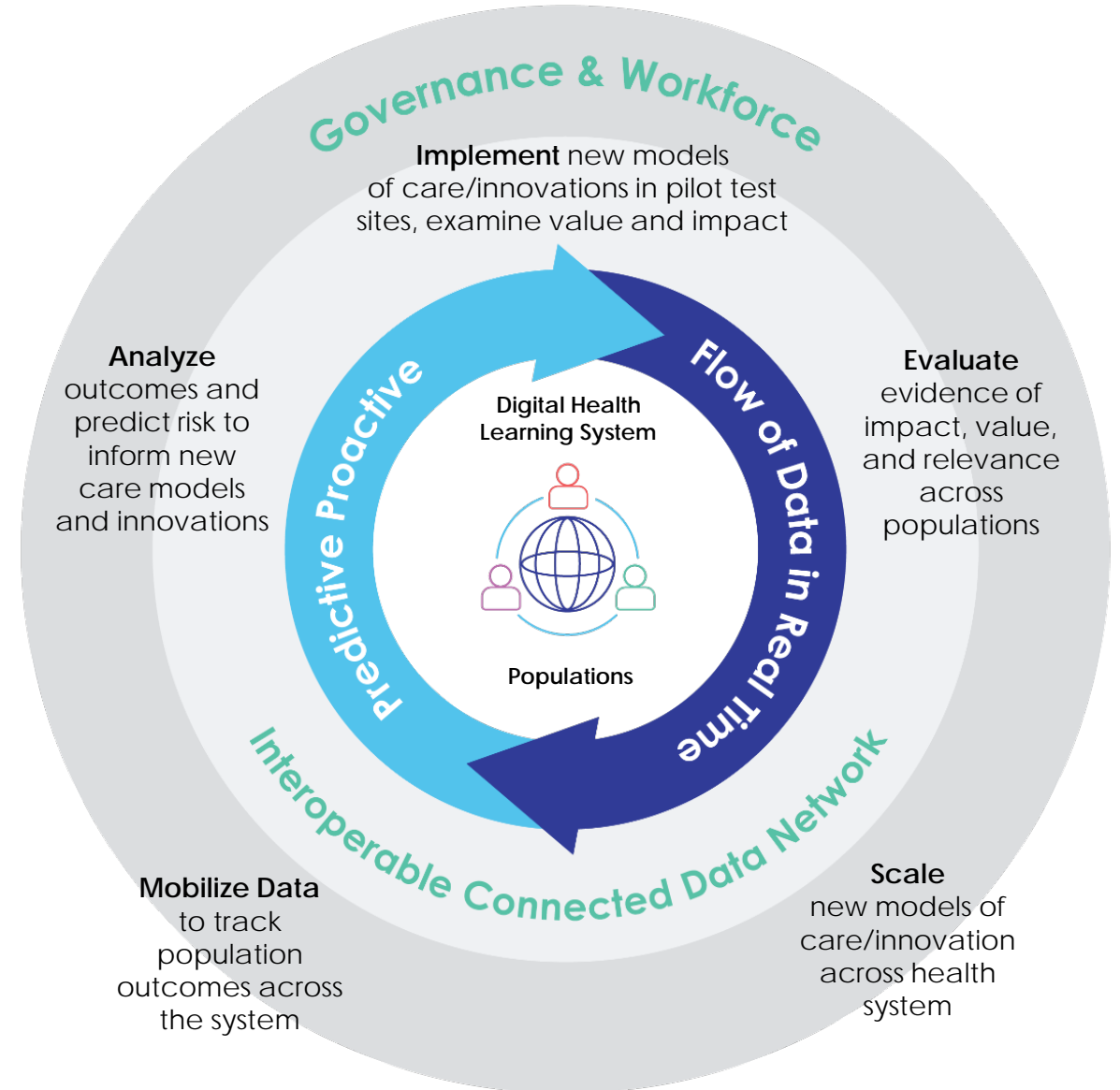
- Improve how data flows across organization, clinician teams and people managing their health to inform decisions, and ensure meaningful connectivity using mobile tools as noted by several indicator statement responses throughout assessment. These recommendations will help to improve the Interoperability dimension of digital health.
- Identify capacity and use of prescriptive analytic tools to support proactive identification of risk, and enable alerts to inform prevention efforts as both are areas the health system can advance the predictive analytics dimension of digital health.
- Build policy frameworks that support transformation of digitally enabled models of care, workforce capacity to deliver digitally enabled care, transparency in publishing health system outcomes as these elements will begin to help health system advance Governance & Workforce dimension of digital health.
- Advance use of personalized approaches to care, capacity for personal reported health outcomes and self-management of health, use of predictive tools to identify population health risk and proactive interventions These recommendations are tied to advancing the Person-Enabled Health dimension of your digital health ecosystem.
- DHI roadmap services to advance digital health capacity

# Digital Health Indicator



# A Mature Digital Health Ecosystem

- Digital health systems prioritize population health outcomes, informed by robust analytics, tracked in real-time
- Outcomes data informs the design, implementation and scalability of new models of care innovations focused on health and wellness
- Interoperability makes it possible for data to flow across the system in real-time
- Governance supports a sustainable workforce and ensures system accountability



# *Get your DHI Rapid Assessment*

Measure your health system's digital health capabilities, identify your strengths and uncover opportunities to inform a comprehensive digital health strategy with a complimentary HIMSS DHI Rapid Assessment.

Your pathway to increased health system capacity and improved population wellness begins now.

<https://dhi.himss.org/rapid>



# Q & A

*Need more information?*

***Visit:** <http://www.himssanalytics.org/DHI>*

***Email:** [Customerservice@himssanalytics.org](mailto:Customerservice@himssanalytics.org)*

